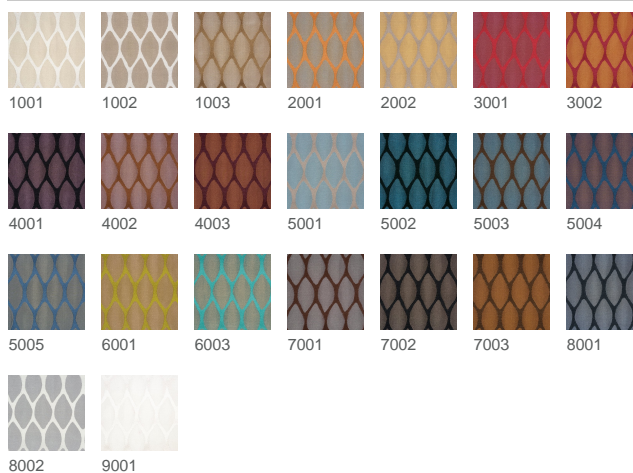


## Pina

Item number 27539, KMAT 61000089



### Product description

The elegant look of the Pina double weave is the modern answer to Art Déco. The sculptural character of the fabric is created by a three-dimensional 3D effect in a diamond pattern. The elegance of the fabric is enhanced by the iridescent coloring. Elegant metallic tones such as antique gold, silver and copper are combined with radiant effect colors such as turquoise, orange and lime green.

### Technical Details

<b>Fabric width</b>	approx. 140 cm
<b>Weight je m<sup>2</sup></b>	approx. 245 g/m <sup>2</sup>
<b>Rapport Width</b>	3
<b>Composition</b>	length approx. 7.5 cm, width approx. 3 cm 100% Polyester FR
<b>Flame retardancy</b>	IMO 2010 FTP Code Part 7, M 1, C 1, BS 5867 Typ B, EN 13773, DIN 4102 / B1, DIN 4102 / B2 Flammability performance is dependant on the foam used.
<b>Light fastness</b>	note 5-6
<b>Wash fastness 40°C DIN EN ISO 105-C06</b>	note 5
<b>Wash fastness 60°C DIN EN ISO 6330 DIN EN ISO 5077</b>	note 5

**Dimensional change Washing 40°C**  
DIN EN ISO 6330 DIN EN ISO 5077

warp approx. +/-1%, weft approx. +/-1%

**Dimensional change Washing 60°C**  
DIN EN ISO 6330 DIN EN ISO 5077

warp approx. +/-2%, weft approx. +/-1%

**Rubbing fastness**  
DIN EN ISO 105-X12

dry: note 4, wet: note 4-5

**Care labelling**



**State**

2024-04-19